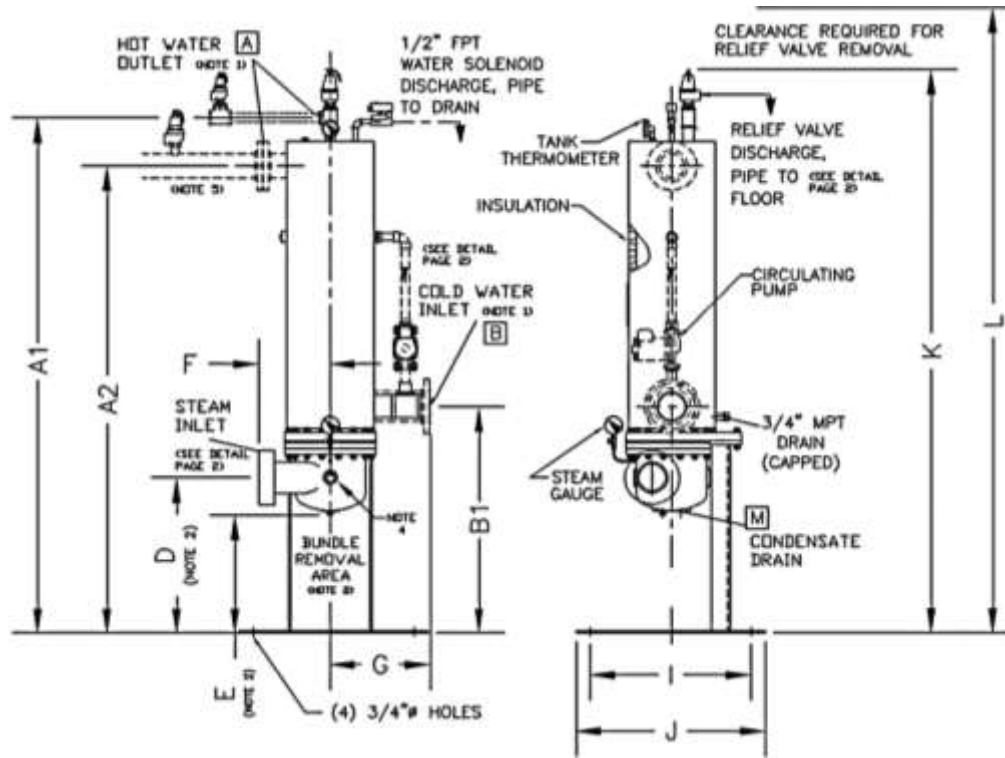


P-K COMPACT®

MODELS PK06, PK08, PK10 & PK12 (DOUBLE AND SINGLE WALL)
STEAM TO WATER



MODEL NUMBER	A	A1	A2	B	B1	D	E	F	G	I	J	K	L	M	Weight (lbs)
PK06S	1-1/2	69-1/8	X	2	31-1/8	22-1/4	18-1/8	8	12	15	20	78	85	3/4	630
PK06D	1-1/2	69-1/8	X	2	31-1/8	20-5/8	16-1/2	8	12	15	20	78	85	3/4	650
PK08S	2	69-1/4	X	3	31-3/8	22-1/2	18	8-3/4	13-3/4	15	20	78	84	1-1/2	730
PK08D	2	69-1/4	X	3	31-3/8	21-1/2	17	8-3/4	13-3/4	15	20	78	84	1-1/2	760
PK10S	2-1/2	72-3/4	X	3	33-1/2	22-5/8	17	12	14-3/4	19	24	81-1/2	89	2	990
PK10D	2-1/2	72-3/4	X	3	33-1/2	21-5/8	16	12	14-3/4	19	24	81-1/2	89	2	1040
PK12S	4	X	85-1/2	5	41-3/8	29	23	11-1/4	18	29	34	97-3/7	101	2	1200
PK12D	4	X	85-1/2	5	41-3/8	27-7/8	21-7/8	11-1/4	18	29	34	97-3/7	101	2	1300

Notes: **Maximum Operating Pressure: 150PSI** **Dimensions in inches** **Rough-in dimensions Only**
Seismic Support Stand Available

- PK12 units Inlet and Outlet connections are ANSI 150# Flanged.
- Single Wall Unit Represented. See chart for different dimensions between Single and Double Wall
- A2 is Outlet height for PK12 Compacts.
- Vacuum Breaker 3/4". VB8-76BR-PSE
- Pressure only relief valve shipped loose and must be installed by contractor in the field as shown.

CW Inlet Temperature: _____
 HW Outlet Temperature: _____
 HW Flow Rate GPM: _____
 Inlet Steam Pressure: _____
 Steam Flow Lb/hr: _____
 Rep: _____
 Phone Number: _____
 Email: _____
 Job Name: _____

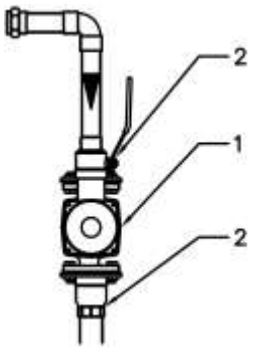
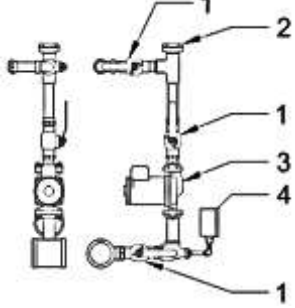
COMPONENTS		<input type="checkbox"/>	SINGLE WALL	<input type="checkbox"/>	DOUBLE WALL
SUPPORT STAND		<input type="checkbox"/>	STANDARD		
		<input type="checkbox"/>	SEISMIC (OPTIONAL)		
SHELLSIDE		<input type="checkbox"/>	SB-171-706 (COPPER-NICKEL)		
TUBESIDE	TUBES	<input type="checkbox"/>	SB-75-C12200 COPPER		
		<input type="checkbox"/>	SB-171-706 COPPER NICKEL		
		<input type="checkbox"/>	316SS (316SS BUNDLE ONLY)		
	TUBESHEET (INNER)	<input type="checkbox"/>	SB-171-464 NAVAL BRASS (STANDARD)		
		<input type="checkbox"/>	SB-171-706 COPPER NICKEL		
		<input type="checkbox"/>	316SS (316SS BUNDLE ONLY)		
TUBESHEET (OUTER)	<input type="checkbox"/>	N/A	<input type="checkbox"/>	CARBON STEEL	
BONNET	<input type="checkbox"/>	CAST IRON			

*316SS available in SINGLE WALL Only

P-K COMPACT®



MODELS PK06, PK08, PK10 & PK12 (DOUBLE AND SINGLE WALL)
STEAM TO WATER



Pump					
Standard Pump			NY Trim		
<input type="checkbox"/> 	Number	Part	<input type="checkbox"/> 	Number	Part
	1	B&G Pump – PL30-B		1	Ball Valve
	2	Isolation Flange		2	Venturi Tee
	Standard pump configuration consists of the pump and isolation flanges for easy pump maintenance. Pump assists with heat transfer, and prevention of scale build-up on tube bundle.			3	B&G Pump
			<input type="checkbox"/> 4 Pressure Gauge		
			NY Trim Application allows the use of the COMPACT Recirculation pump to take place of the Building Recirculation pump with the use of the venturi tee. 3 pump sizes are available for different building pressure drop.		
Pump Selection					
			<input type="checkbox"/> B&G Pump – PL30-B		
			<input type="checkbox"/> B&G Pump – PL36-B		
			<input type="checkbox"/> B&G Pump – PL50-B		

Control Valve							
Valve Type		1"	1 1/2"	2"	2 1/2"	3"	4"
<input type="checkbox"/>	Electric	Manufacturer	Siemens			Watson McDaniel	
		Model	MVF461H			HB Series	CV Series
		Flange to Flange	6.3"	7.87"	9.06"	10.88"	12.52" 14.49"
<input type="checkbox"/>	Pneumatic	Manufacturer	Watson McDaniel				
		Model	HB Series			CV Series	
		Flange to Flange	4.5"	5"	6"	10.88"	12.52" 14.49"
<input type="checkbox"/>	Self Contained	Manufacturer	Watson McDaniel				
		Model	HD Series				
		Flange to Flange	7"	8.75"	10.875"	11.75"	13.25" 14.75"

Pilot Valve and Controller Submittals			
<input type="checkbox"/>	Electric	Type-J Thermocouple with LOVE Controller	<input type="checkbox"/> Control Panel: Standard Control Panel <input type="checkbox"/> Control Panel: Standard Control Panel with Alarm Relay <input type="checkbox"/> Control Panel: Standard Control Panel with Alarm Relay, Horn, & Silencing Switch <input type="checkbox"/> Control Panel: Electronic Control Panel with BACnet (Electric Only)
<input type="checkbox"/>	Pneumatic	Accritem Pneumatic Temperature Controller	
<input type="checkbox"/>	Self-Contained	Watson McDaniel PRTP Temperature Controller	

Relief Valve							
SIZE		Pressure Only BTU/HR CAPACITY		SIZE		Temperature & Pressure BTU/HR CAPACITY	
<input type="checkbox"/>	3/4"	1,817,000		<input type="checkbox"/>	3/4"	1,912,000	
<input type="checkbox"/>	1"	2,858,000		<input type="checkbox"/>	1"	3,625,000	
<input type="checkbox"/>	1 1/2"	7,322,000		<input type="checkbox"/>	1 1/2"	6,050,000	