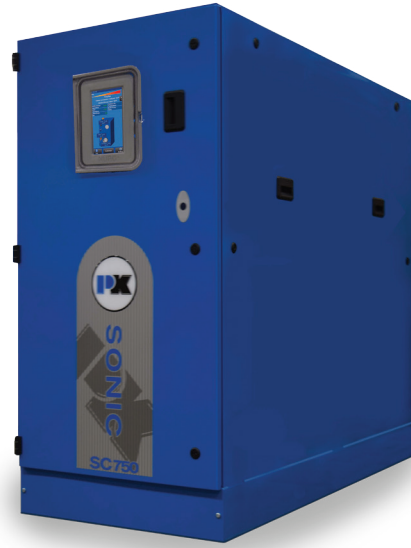




Patterson-Kelley

P-K SONIC®

Breaking Barriers.



Introducing the P-K SONIC®

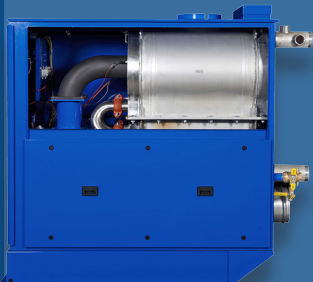
Expanding on our stainless reputation.

The new P-K SONIC stainless, condensing boiler surpasses all expectations in efficiency, size and material design, operating up to certified 97% efficiency with up to 7:1 turndown and ultra-low emissions. The P-K SONIC® comes standard with the NURO® Touch-Screen Control System, providing the ability to easily control your indoor boiler system anytime, from anywhere.

Big output in a small design

Easily fits through a standard 36-inch doorway and navigates corners and hallways with ease.

COMPETITION SIZE



A design that fits

60%

*SMALLER THAN THE
LEADING COMPETITION

**Calculation based on competitor boiler size of 40.5"Wx109"Dx80"H*

FEATURES

- ✓ Unique stainless alloys resist corrosive condensation
- ✓ Compact design fits through a standard 36" doorway
- ✓ Full modulation burner with up to 7:1 turndown
- ✓ Available with domestic hot water option (650 to 1,000MBTU only)
- ✓ NURO® Touch-Screen Control System allows for easy control anytime, anywhere
- ✓ Front accessibility reduces repair and maintenance costs
- ✓ Low electrical energy consumption increases savings

Easy maintenance for better performance

Compact design allows easy to access front maintenance door, saving time and money associated with repair and maintenance.

*Because we are continuously evolving our products, descriptions and technical data are subject to change without notice.
Contact your local Harsco Industrial Patterson-Kelley representative for the most up-to-date information and product application support.*

Harsco Industrial Patterson-Kelley
155 Burson Street
East Stroudsburg, PA 18301
www.harscopk.com

Phone: 570.476.7261
Toll Free: 877.728.5351
Fax: 570.476.7247

SONIC 201 0117



Patterson-Kelley

P-K SONIC®

Breaking Barriers in Design and Reliability

BOILER RATINGS	SC-650 SCD-650	SC-750 SCD-750	SC-850 SCD-850	SC-1000 SCD-1000	SC-1500	SC-2000	SC-3000	SC-4000
EFFICIENCY	94%	94%	94%	92%	96%	96%	96%	96%
MAX BTU/HR INPUT	650,000	750,000	850,000	1,000,000	1,500,000	2,000,000	3,000,000	4,000,000
MAX KW INPUT	191	220	249	293	439	586	879	1,172
MAX BTU/HR OUTPUT	611,650	705,750	799,850	923,000	1,440,000	1,920,000	2,880,000	3,840,000
MAX KW OUTPUT	179	207	234	271	422	562	844	1125
MIN FLOW @ IGNITION (GPM)	25	25	30	30	48	48	72	96
MIN FLOW @ IGNITION (LITRES/SEC)	1.58	1.58	1.9	1.9	3.03	3.03	4.54	6.06
MIN BTU/HR INPUT	125,000	125,000	141,000	143,000	300,000	400,000	600,000	800,000
MIN KW INPUT	37	37	41	42	88	117	176	234
MIN BTU/HR OUTPUT	122,300	117,600	133,300	131,850	288,000	384,000	576,000	768,000
MIN KW OUTPUT	36	34.5	40	39	85	113	169	225
INDOOR/OUTDOOR	Indoor	Indoor	Indoor	Indoor	Indoor	Indoor	Indoor	Indoor
TURNDOWN	5:1	6:1	6:1	7:1	5:1	5:1	5:1	5:1
FUEL NG=NATURAL GAS, LP=PROPANE, DF=DUALFUEL	NG LP DF	NG LP DF	NG LP DF	NG LP DF	NG LP DF	NG LP DF	NG LP DF	NG LP DF
DIMENSIONS	SC-650 SCD-650	SC-750 SCD-750	SC-850 SCD-850	SC-1000 SCD-1000	SC-1500	SC-2000	SC-3000	SC-4000
DEPTH (IN / MM)	54 / 1372	54 / 1372	54 / 1372	54 / 1372	65 / 1651	66 / 1674	66 / 1674	66 / 1674
WIDTH (IN / MM)	25 / 641	25 / 641	25 / 641	25 / 641	31 / 787	32 / 808	32 / 808	32 / 808
HEIGHT (IN / MM)	51 / 1295	51 / 1295	51 / 1295	51 / 1295	68 / 1727	65 / 1652	65 / 1652	65 / 1652
OPERATING PARAMETERS	SC-650 SCD-650	SC-750 SCD-750	SC-850 SCD-850	SC-1000 SCD-1000	SC-1500	SC-2000	SC-3000	SC-4000
BOILER HP	18	21	24	28	43	57	86	115
MAX INLET GAS PRESSURE NG/LP (INCHES WC)	14/14	14/14	14/14	14/14	14/14	14/14	14/14	14/14
MIN INLET GAS PRESSURE NG/LP (INCHES WC)	7/11	7/11	7/11	7/11	4/7	4/7	4/7	4/7
SHIPPING WEIGHT (LBS/KILOS)	780 / 354	780 / 354	800 / 363	810 / 367	1400 / 635	1400 / 635	1900 / 862	1900 / 862
ELECTRICAL REQUIREMENTS	120V 1ph 60hz 10 amps	120V 1ph 60hz 10 amps	120V 1ph 60hz 10 amps	120V 1ph 60hz 10 amps	208/240V 1ph 60hz 15 amps	208/240V 1ph 60hz 15 amps	208/240V 3ph 440/480VAC 3ph 60hz 20 amps	208/240V 3ph 440/480VAC 3ph 60hz 20 amps
OPERATING WEIGHT (LBS/KILOS)	780 / 354	780 / 354	800 / 363	810 / 367	1650 / 748	1650 / 748	2141 / 971	2191 / 994
FLOW RATE 20°F ΔT GPM (LT / SEC)	62 / 4	72 / 4.5	82 / 5	92 / 6	144 / 9	192 / 13	285 / 18	384 / 25
ACCEPTABLE VENT MATERIALS	SC-650 SCD-650	SC-750 SCD-750	SC-850 SCD-850	SC-1000 SCD-1000	SC-1500	SC-2000	SC-3000	SC-4000
AL29-4C	✓	✓	✓	✓	✓	✓	✓	✓
316L SS	✓	✓	✓	✓	✓	✓	✓	✓
PVC	—	—	—	—	—	—	—	—
CPVC	✓*	✓*	✓*	✓*	✓	✓	✓	✓
POLYPROPYLENE ^{NEW}	*/**	*/**	*/**	*/**	✓	✓	✓	✓
CAT II	✓	✓	✓	✓	✓	✓	✓	✓
CAT IV	✓	✓	✓	✓	✓	✓	✓	✓

*Canada: when this material is used for venting, it must be listed ULC-S6236
 **USA: when this material is used for venting, it must be listed UL-1738

Certifications

GE GAP (IRI) GAP.4.1.0
 AND GAP.4.1.3

FM Global 6-4/12-69



ASME Code Section IV
Applies to Heating Boilers



ANSI Z21.13
 CSA 4.9
Canada (Gas Appliances)
U.S. (Gas Appliance)



U.S. Green Building Council Member



NURO® Touch-Screen Control System

With the most intuitive interface in the industry, the NURO® Touch-Screen Control System ensures safe, efficient, and reliable boiler performance year-after-year.



Harsco Industrial Patterson-Kelley
 155 Burson Street
 East Stroudsburg, PA 18301
 www.harscopk.com

Phone: 570.476.7261
 Toll Free: 877.728.5351
 Fax: 570.476.7247