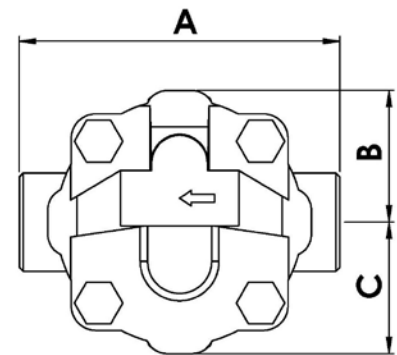
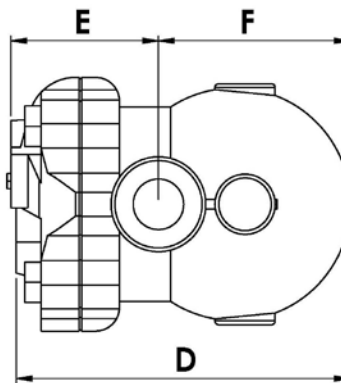


FLOAT AND THERMOSTATIC STEAM TRAPS – CFTS Series



1/2", 3/4" and 1"



APPLICATIONS

Series CFTS float & thermostatic steam traps provide immediate and continuous discharge of large amounts of condensate, air and non-condensable gases. These traps meet large capacity drainage needs required on such services as:

- Air Handling Coils
- Heat Exchangers
- Evaporators
- Hot Water Generators
- Steam Process Equipment

FEATURES

- Horizontal flow straight and vertical flow down pattern design.
- Sizes 1/2", 3/4" and 1", NPT end connections
- Repairable in-line. Do not need to remove steam trap body from pipeline to install repair parts
- Thermostatic air vent for removing large volumes of air
- Adjusts to pressure and load variations instantaneously

MATERIALS

Part	Description
Body	Cast Iron
Cover	Cast Iron
Cover Gasket	Non-Asbestos Fiber
Valve Seat	420SS
Float & Lever Ass'y	304SS
Air Vent	304SS
Bolt	ASTM 193 Gr. B7
Drain Plug	Carbon steel
Bracket Ass'y	304SS
Gasket	Copper

RATINGS

PMO: (maximum operating pressure)	200 psi
TMO: (maximum operating temperature)	425°F
PMA: (maximum allowable pressure)	250 psi
TMA: (maximum allowable temperature)	425°F

DIMENSIONS

Size		A		B		C		D		E		F		Weight	
mm	in	mm	in	mm	in	mm	in	mm	in	mm	in	mm	in	kg	lbs
15	1/2	130	5-1/8	54	2-1/8	54	2-1/8	146	5-3/4	62	2-15/32	81	3-3/16	3.29	7-1/4
20	3/4	130	5-1/8	54	2-1/8	54	2-1/8	146	5-3/4	62	2-15/32	81	3-3/16	3.29	7-1/4
25	1	145	5-23/32	57	2-1/4	57	2-1/4	162	6-3/8	59	2-11/32	103	4-1/16	4.3	9-1/2

CAPACITIES (Gross) – Lbs Condensate Per Hour

Model	Size	Pressure Differential (PSIG)													
		0.5	1	5	10	15	30	65	90	145	200				
CFTS-65	1/2, 3/4	110	165	360	50	610	780	1090							
CFTS-65	1	220	295	924	1310	1540	1960	2703							
CFTS-145	1/2, 3/4	55	75	185	305	330	400	560	660	925					
CFTS-145	1	150	220	485	580	704	945	1320	1495	1804					
CFTS-200	1/2, 3/4	32	55	120	298	308	370	505	595	825	1060				
CFTS-200	1	110	165	270	395	452	495	705	890	990	1120				

Colton has a policy of continuous product research and improvement and reserves the right to change design and specifications without notice.

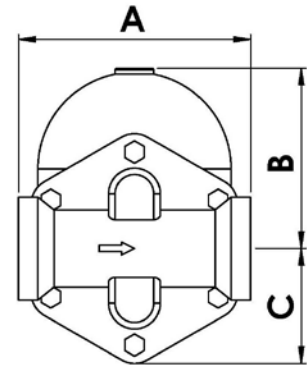
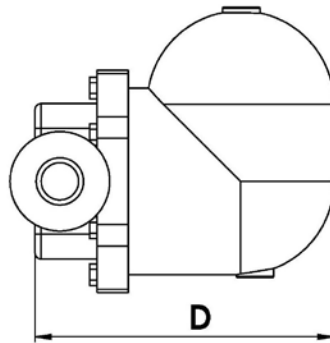


Tel: 1-888-300-9155 Fax: 1-888-300-9160 www.COLTONIND.com info@coltonind.com

FLOAT AND THERMOSTATIC STEAM TRAPS – CFTS Series



1-1/2" and 2"



APPLICATIONS

Series CFTS float & thermostatic steam traps provide immediate and continuous discharge of large amounts of condensate, air and non-condensable gases. These traps meet large capacity drainage needs required on such services as:

- Air Handling Coils
- Heat Exchangers
- Evaporators
- Hot Water Generators
- Steam Process Equipment

FEATURES

- Horizontal straight through flow pattern design.
- Sizes 1-1/2" and 2", NPT end connections
- Thermostatic air vent for removing large volumes of air
- Adjusts to pressure and load variations instantaneously

MATERIALS

Part	Description
Body	Cast Iron
Cover	Cast Iron
Cover Gasket	Non-Asbestos Fiber
Valve Seat	420SS
Float & Lev'ir Ass'y	304SS
Air Vent	304SS
Bolt	ASTM 193 Gr. B7
Drain Plug	Carbon steel
Bracket Ass'y	304SS
Gasket	Copper

RATINGS

PMO: (maximum operating pressure)	200 psi
TMO: (maximum operating temperature)	425°F
PMA: (maximum allowable pressure)	250 psi
TMA: (maximum allowable temperature)	425°F

DIMENSIONS

Size		A		B		C		D		Weight	
mm	in	mm	in	mm	in	mm	in	mm	In	Kg	lbs
40	1-1/2	229	9	178	7	114	4-15/32	305	12	29	64
50	2	229	9	178	7	114	4-15/32	305	12	29	64

CAPACITIES (Gross) – Lbs Condensate Per Hour

Model	Size	Pressure Differential (PSIG)									
		0.5	1	5	10	15	30	65	90	145	200
CFTS-65	1-1/2	1660	2350	5250	6864	7198	8437	11123			
CFTS-65	2	6930	8470	13300	14050	16280	21860	33660			
CFTS-145	1-1/2	1170	1670	3740	5302	5904	6457	7517	8140	11275	
CFTS-200	1-1/2	960	1375	3090	4554	4989	6182	6995	7407	9615	11420
CFTS-200	2	2040	2700	6050	8580	10250	14490	21730	25100	32400	38430

Colton has a policy of continuous product research and improvement and reserves the right to change design and specifications without notice.

