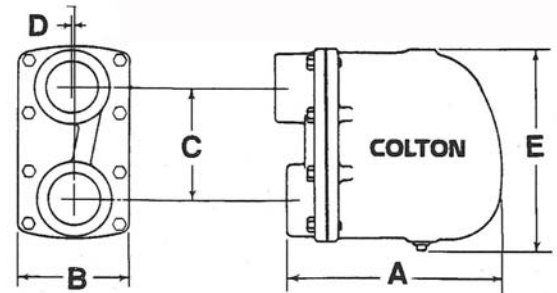
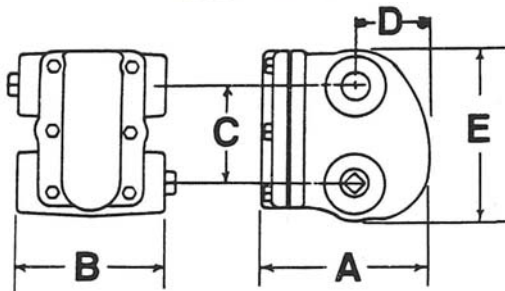


DRAIN TRAPS FOR GASEOUS SYSTEMS – FAX/FAC Series



FAX SERIES
3/4" and 1" All Ranges
1-1/4" 15 psi and 30 psi only

FAC SERIES
1-1/2" and 2" All Ranges
1-1/4" 75 psi and 125 psi only

CONSTRUCTION

Colton float type drain traps are compact, of rugged design, with easy access to all interior parts. The body is cast with two inlet and two outlet pipe connections that permit four combinations*

* Except the 1-1/4" FAC-075, 150 and all 1-1/2" and 2" models which are piped through the cover

RATINGS

PMD (maximum differential pressure): See model selection
TMO (maximum operating temperature): 400°F
PMA (maximum allowable pressure): 250 psi
TMA (maximum allowable temperature): 450°F

MATERIALS

Part	Description
Cover	Cast Iron, ASTM-A278 Class 30
Body	Cast Iron, ASTM-A278 Class 30
Mechanism	Stainless Steel
Internal Plug	Bronze
Float	Stainless Steel
Gasket	Non-Asbestos Fiber
Cover Bolts	Steel, Grade 5
Plug	Cast Iron, ASTM-A278 Class 30

DIMENSIONS AND WEIGHTS

SIZE		MODELS	DIMENSIONS										WEIGHT	
			A		B		C		D		E			
mm	in		mm	in	mm	in	mm	in	mm	in	mm	in	kg	lbs
20	3/4	FAX-015, 030, 075, 150	152	6	146	5-3/4	86	3-3/8	76	3	152	6	6.35	14
25	1	FAX-015, 030, 075, 150	152	6	146	5-3/4	86	3-3/8	76	3	152	6	6.35	14
32	1-1/4	FAX-015, 030	152	6	146	5-3/4	86	3-3/8	76	3	152	6	6.35	14
32	1-1/4	FAC-075, 150	213	8-3/8	111	4-3/8	78	3-1/16	15	19/32	206	8-1/8	7	15.5
40	1-1/2	FAC-015, 030, 075, 150	213	8-3/8	111	4-3/8	78	3-1/16	15	19/32	206	8-1/8	7	15.5
50	2	FAC-015, 030, 075, 150	255	10-1/16	127	5	125	4-15/16	3	1/8	225	8-7/8	12	26.5



DRAIN TRAPS FOR GASEOUS SYSTEMS – FAX/FAC Series



CAPACITIES (Gross) – Lbs. condensate per hour @ 150°F

Pipe Size	Model No.	Pressure Differential (PSIG)														
		1/4	1/2	1	2	5	10	15	20	25	30	40	50	75	100	150
3/4	FAX-015	575	735	1005	1355	1610	2175	2475	—	—	—	—	—	—	—	—
1	FAX-015	575	735	1005	1355	1610	2175	2475	—	—	—	—	—	—	—	—
1-1/4	FAX-015	945	1210	1540	1950	2820	4170	4505	—	—	—	—	—	—	—	—
1-1/2	FAC-015	1730	2675	3780	5200	7875	10395	11970	—	—	—	—	—	—	—	—
2	FAC-015	3620	4410	5670	7325	10865	14175	17165	—	—	—	—	—	—	—	—
3/4	FAX-030	440	580	770	1025	1350	1575	1850	2130	2310	2475	—	—	—	—	—
1	FAX-030	440	580	770	1025	1350	1575	1850	2130	2310	2475	—	—	—	—	—
1-1/4	FAX-030	590	785	1085	1435	1920	2360	2645	2835	3525	4050	—	—	—	—	—
1-1/2	FAC-030	1575	2050	2675	3620	5355	7245	8660	9450	10395	11025	—	—	—	—	—
2	FAC-030	2050	2835	3935	5355	8190	10710	12285	13545	14650	15750	—	—	—	—	—
3/4	FAX-075	360	450	630	755	945	1085	1230	1360	1470	1530	1785	2020	2470	—	—
1	FAX-075	360	450	630	755	945	1085	1230	1360	1470	1530	1785	2020	2470	—	—
1-1/4	FAC-075	800	1080	1455	1950	2865	3990	4575	5100	5625	6000	6585	7125	8130	—	—
1-1/2	FAC-075	800	1080	1455	1950	2865	3990	4575	5100	5625	6000	6585	7125	8130	—	—
2	FAC-075	1340	1730	2360	3150	4835	6535	7480	8190	8660	9135	10080	10710	12125	—	—
3/4	FAX-150	335	425	525	575	680	750	800	900	975	1080	1275	1515	1910	2250	2460
1	FAX-150	335	425	525	575	680	750	800	900	975	1080	1275	1515	1910	2250	2460
1-1/4	FAC-150	570	765	1010	1320	1965	2550	3100	3470	3825	4065	4550	4835	5685	6300	6720
1-1/2	FAC-150	570	765	1010	1320	1965	2550	3100	3470	3825	4065	4550	4835	5685	6300	6720
2	FAC-150	865	1060	1385	1900	3070	4100	4725	5120	5510	5985	6615	7275	8660	9605	10395

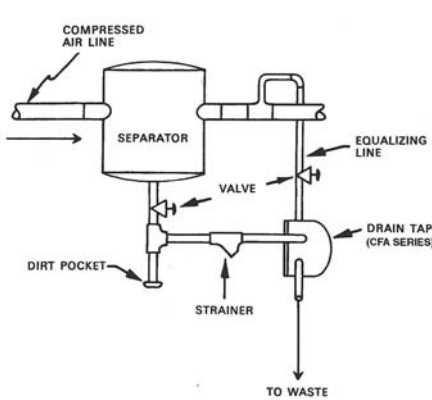


Fig. 1

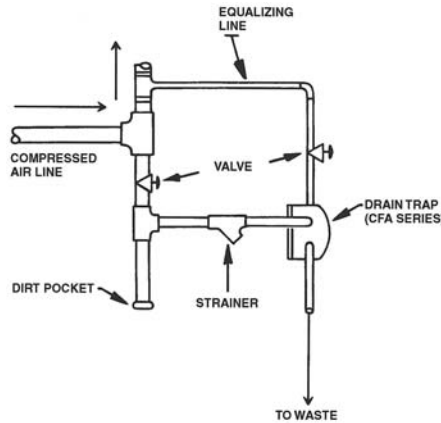


Fig.2

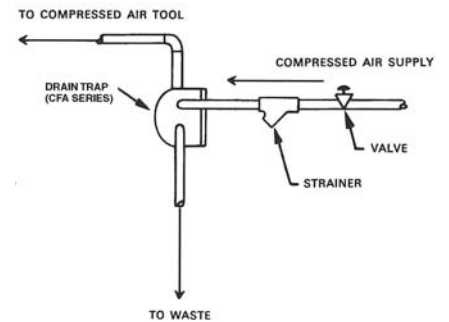


Fig.3

Fig. 1 & Fig. 2

An equalizing line must be installed between the top of the trap body and the compressed air supply. This line prevents air binding, and allows water to enter the trap.

FIG. 3

This shows a drain trap used in the supply line to a compressed air tool. In this case the supply to the tool may be taken from the tapping in the top of the trap body. The equalizing line is not necessary.

Colton has a policy of continuous product research and improvement and reserves the right to change design and specifications without notice.

